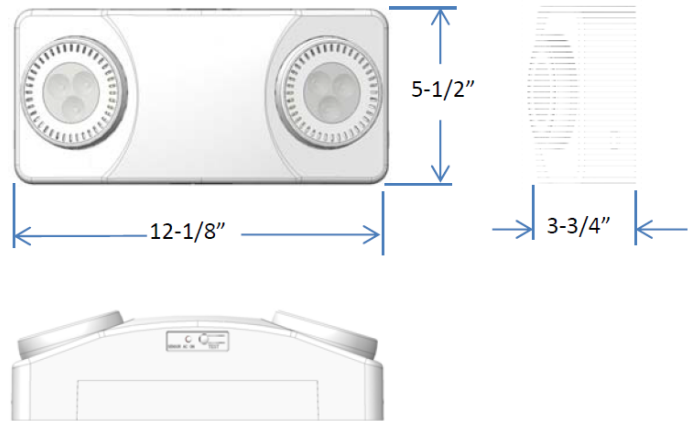


Product Specification of LED Emergency Light

Model No. : EXL-800L series

Product Photo and Dimension



Product Specification

Parameter		Spec	Condition
Input	Voltage / Frequency	120-277Vac, 50/60Hz	-
	Maintenance Power consumption	< 1W	Meet circle BC
Battery	Type	LiFePO4 battery	-
	Charge time	24 hours	-
	Discharge time	> 90 minutes	-
Output (standout version)	Luminous flux	520lm	-
	Installation spacing distance	52ft spacing distance, 6ft wide corridor	7.5ft height
	Installation spacing distance	55ft spacing distance, 6ft wide corridor	10ft height
	Lamp head	2835 LED 1W * 3pcs, 2.7W per head, CCT 6000K	-
Output (Premium version)	Luminous flux	1100lm	-
	Installation spacing distance	84ft spacing distance, 6ft wide corridor	7.5ft height
	Installation spacing distance	90ft spacing distance, 6ft wide corridor	10ft height
	Lamp head	3535 LED 3W * 3pcs, 5.4W per head, CCT 5000K	-

Product Specification

Parameter		Spec	Condition
Function	Test facility	Manual test	-
	Protection circuit	Brownout, overload and short circuit protection	Meet circle BC
Material	Housing	ABS	-
	Lamp head	PC	-
	Finish	White	-
Mounting		Wall mount, ceiling mount	-
Ambient temperature		10°C~+40°C, suitable for damp location	-
Certificate		UL meet UL924 standard Circle BC meet CEC title 20	-

Order Guide

Family	Test Facility	Lumen Output	Housing Color	Input Voltage
EXL-800L	Manual test	Blank: Standard model -HO: High lumen output model	White	120-277V

Model List and Parameters

No.	Model	Test facility	Battery	Recharge time	Emergency time	Input			Output	
						Voltage	Hz	Power consumption (maintenance mode)	Lamp head	Luminous flux
1	EXL-800L	Manual test	LiFePO4 9.6V 1500mA	24 hours	90 minutes	120-277V	60Hz	2.5W	2.7W*2pcs	520lm
2	EXL-800L-HO	Manual test	LiFePO4 9.6V 3000mAh	24 hours	90 minutes	120-277V	60Hz	3.5W	5.4W*2pcs	1100lm

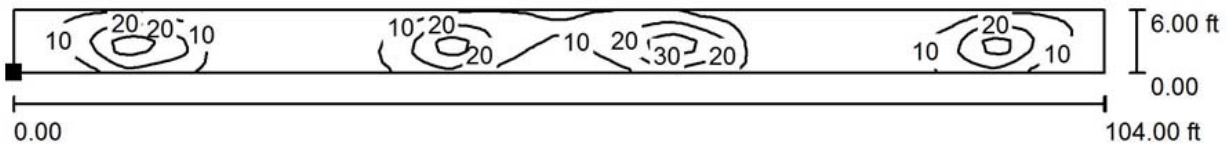
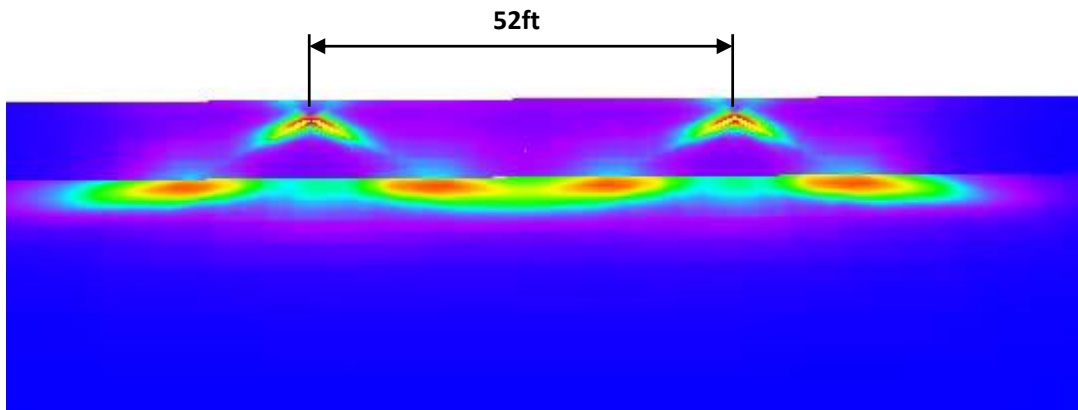
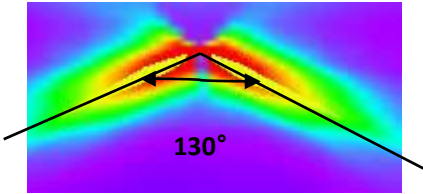
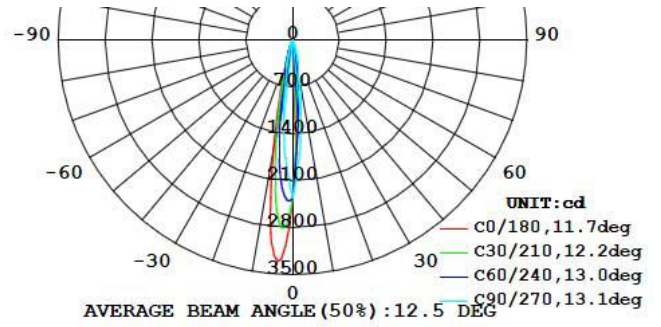


LITE
ElectronicsTM

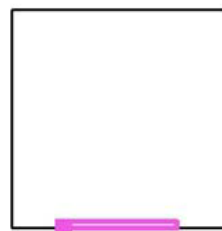
EXL-800L Series LED Emergency Light Specification

Photometric ---Standard version---7.5ft mounting height

Standard version total 520lm output,
Unit mount on 7.5ft height, 52ft spacing distance.



Position of surface in room:
Marked point: (-52.000 ft, 0.000 ft, 0.000 ft)



Grid: 186 x 6 Points

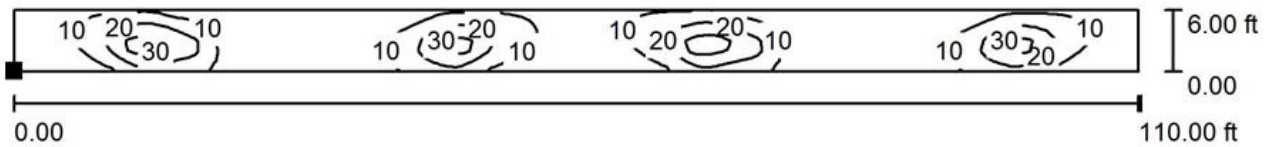
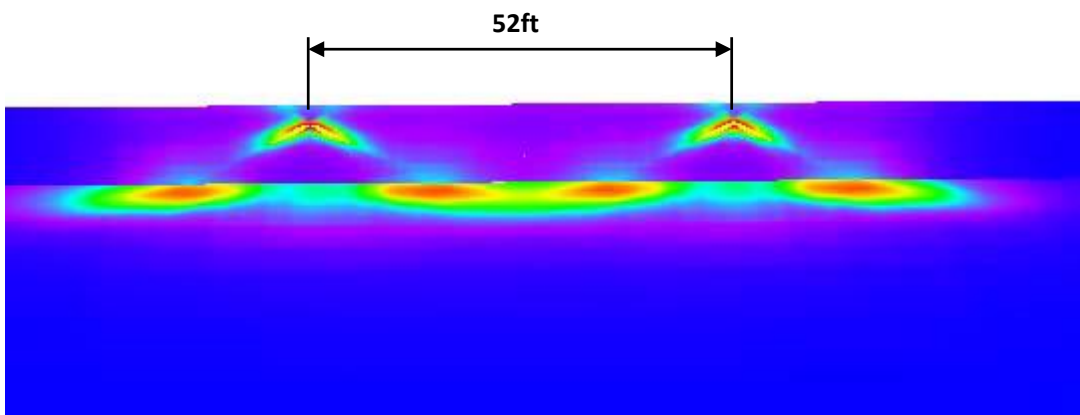
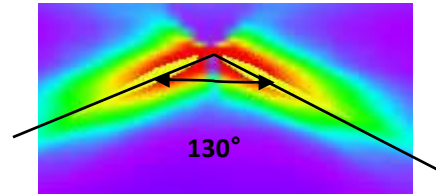
E_{av} [lx]
12

E_{min} [lx]
2.27

E_{max} [lx]
37

Photometric ---Standard version---10ft mounting height

Standard version total 520lm output,
Unit mount on 10ft height, 55ft spacing distance



Position of surface in room:
Marked point: (-55.000 ft, 0.000 ft, 0.000 ft)



Grid: 186 x 6 Points

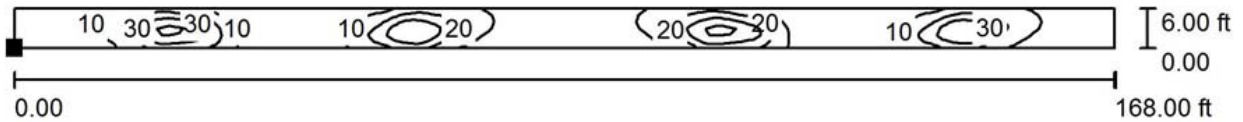
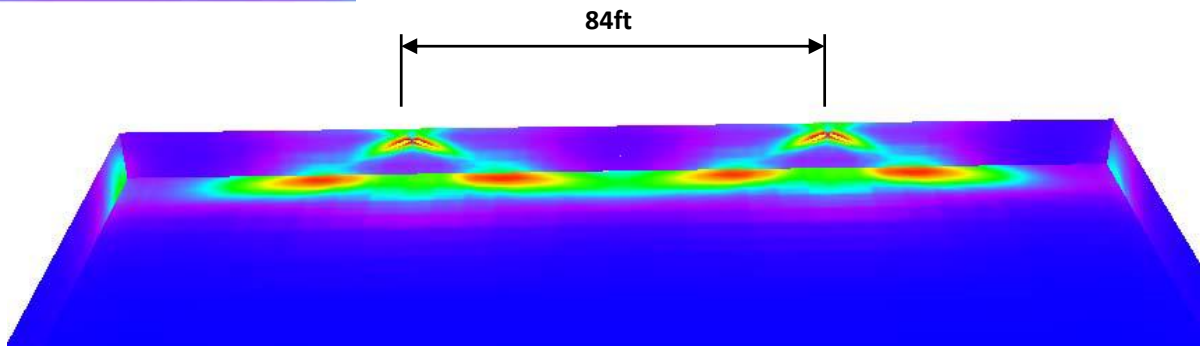
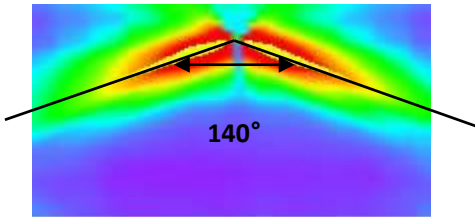
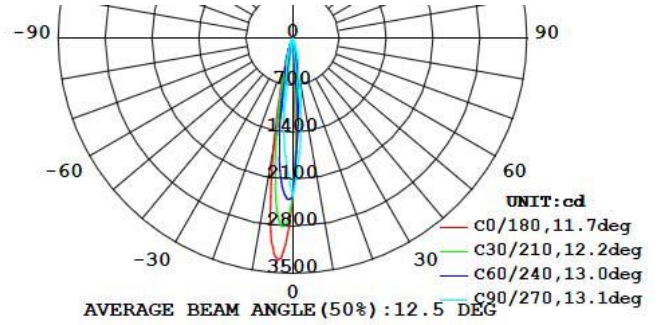
E_{av} [lx]
11

E_{min} [lx]
1.83

E_{max} [lx]
36

Photometric ---Premium version---7.5ft mounting height

Premium version total 1100lm output,
Unit mount on 7.5ft height, 84ft spacing distance.



Position of surface in room:
Marked point: (-84.000 ft, 0.000 ft, 0.000 ft)



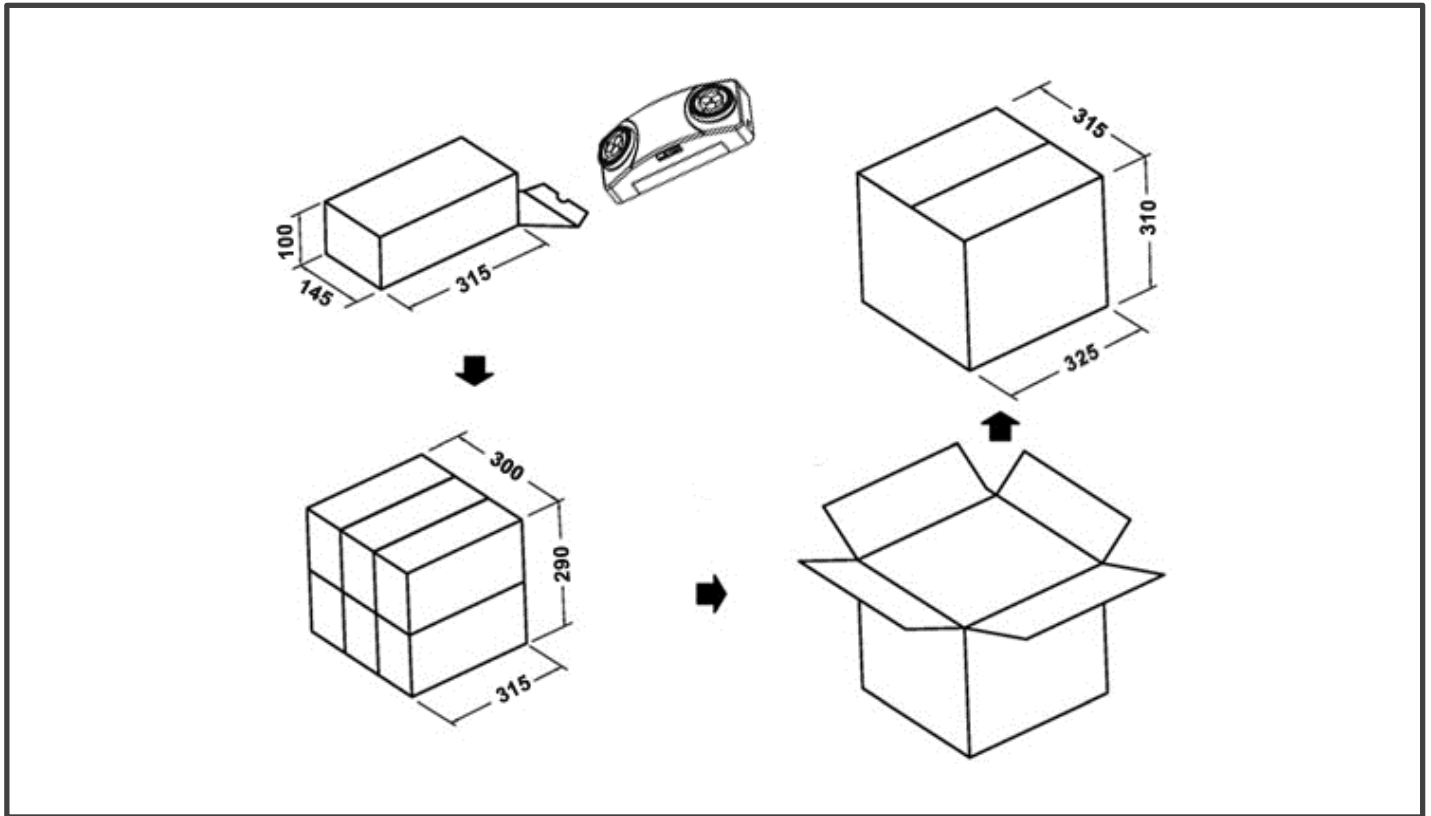
Grid: 186 x 6 Points

E_{av} [lx]
14

E_{min} [lx]
1.51

E_{max} [lx]
44

Packaging



No.	Model	Packing Qty	N.W/G.W	Size(L*W*H)
1	EXL-800L	6Pcs	5.7kg / 7.0kg	325(L)*315(W)*310(H)mm
2	EXL-800L-HO	6pcs	7.0kg / 8.3kg	325(L)*315(W)*310(H)mm